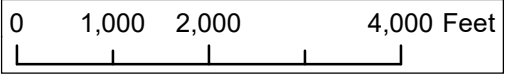


40.514953
-76.473511

2019 BOYER TULIP II HERBICIDE
STATE GAME LANDS 080
LEBANON COUNTY
BETHEL TOWNSHIP
60 ACRES
CONVENTIONAL SPRAY
SPRAY BETWEEN JUNE 10, 2019 & JUNE 28. 2019

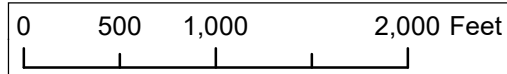
- ▲ Parking_Area
- Chemspray_Area
- Administrative Road



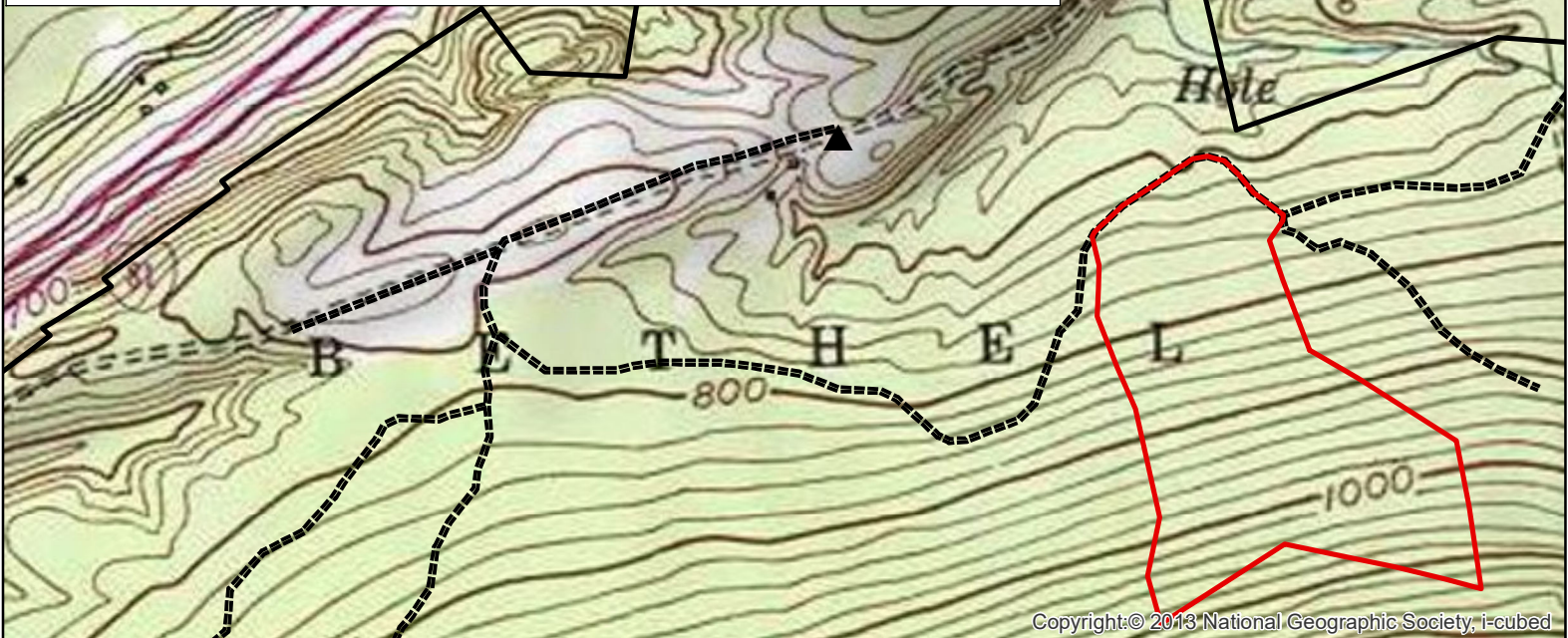


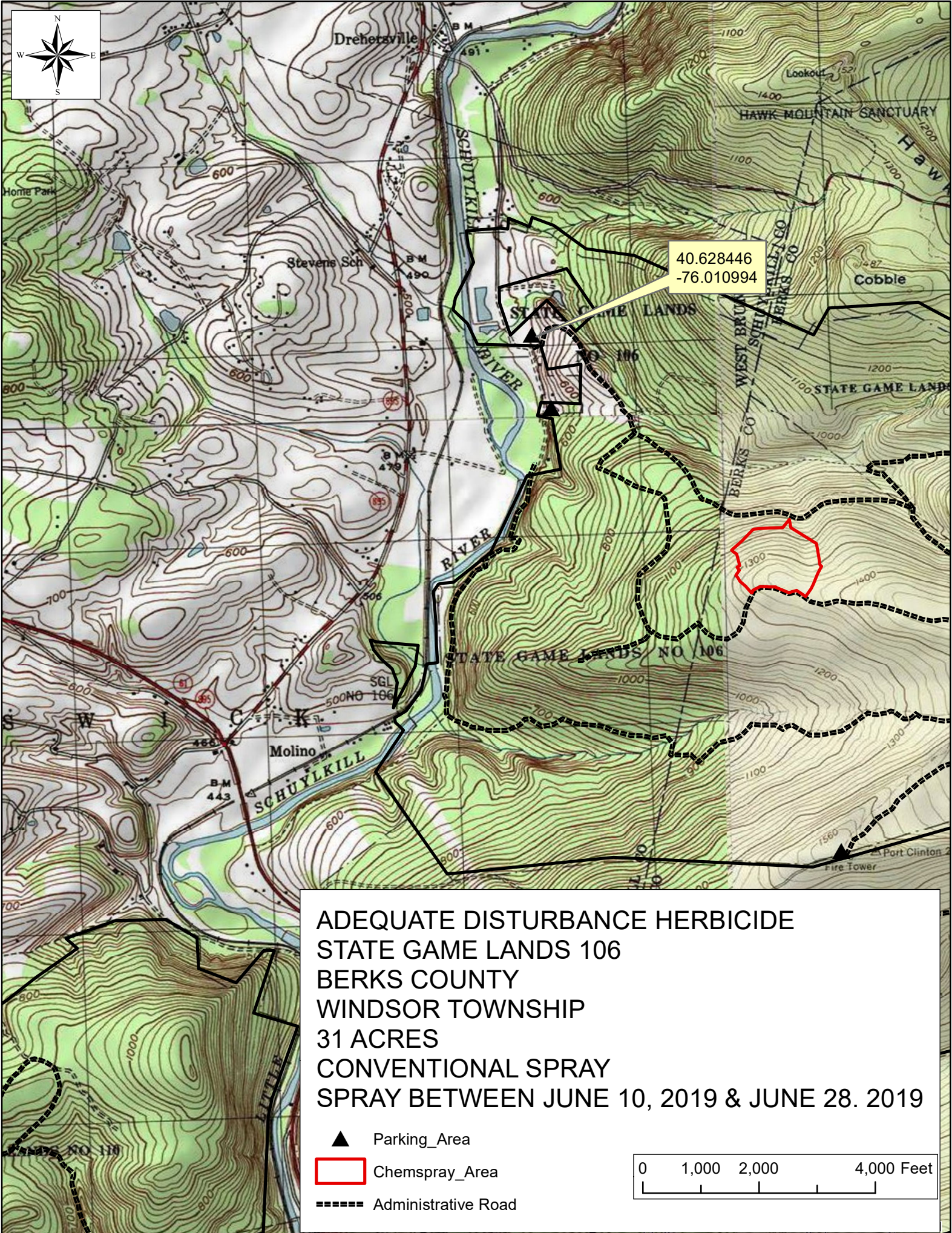
2019 BOYER TULIP II HERBICIDE
STATE GAME LANDS 080
LEBANON COUNTY
BETHEL TOWNSHIP
60 ACRES
CONVENTIONAL SPRAY
SPRAY BETWEEN JUNE 10, 2019 & JUNE 28. 2019

- ▲ Parking_Area
- ▭ Chemspray_Area
- ⋯ Administrative Road



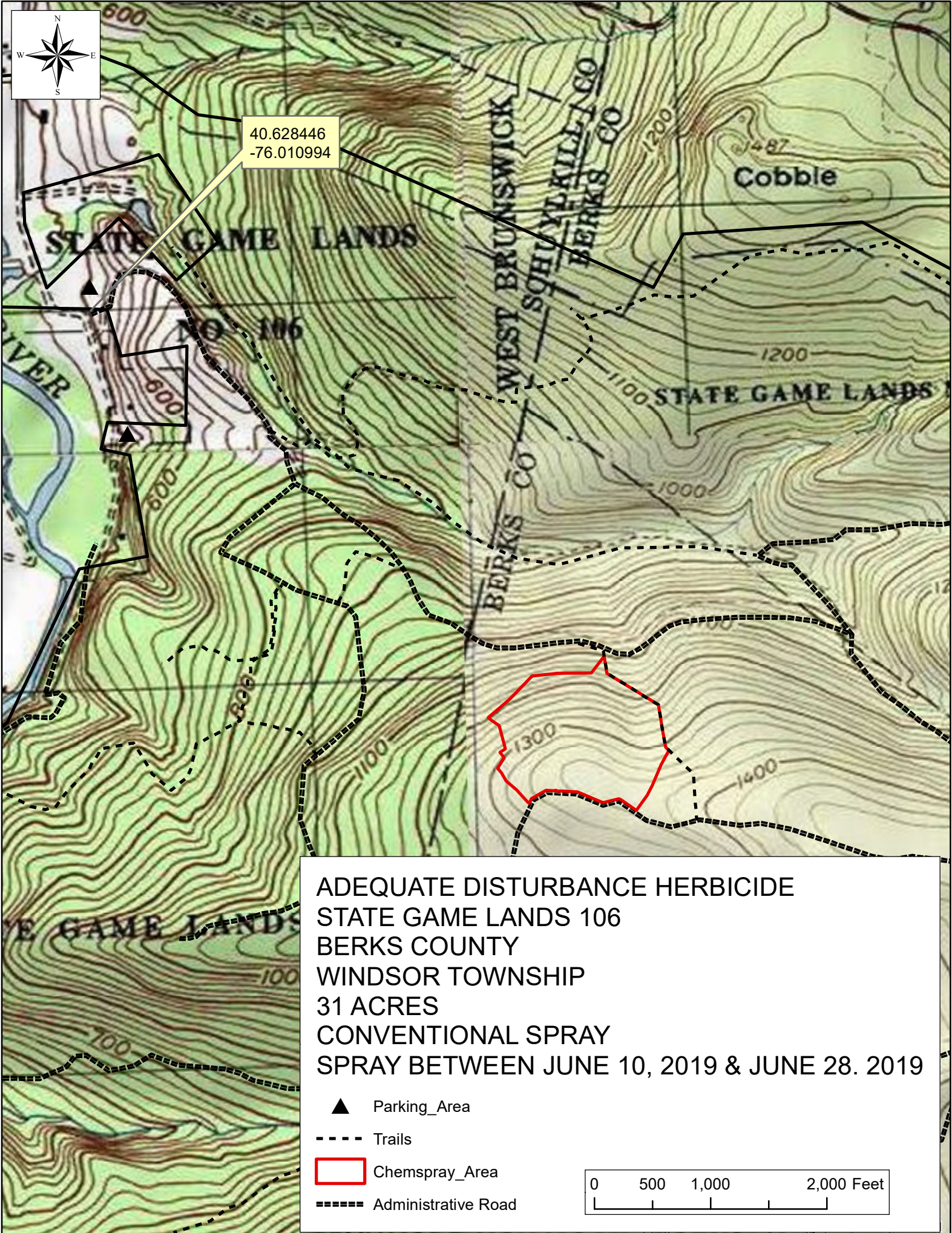
40.514953
-76.473511





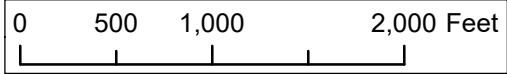


40.628446
-76.010994



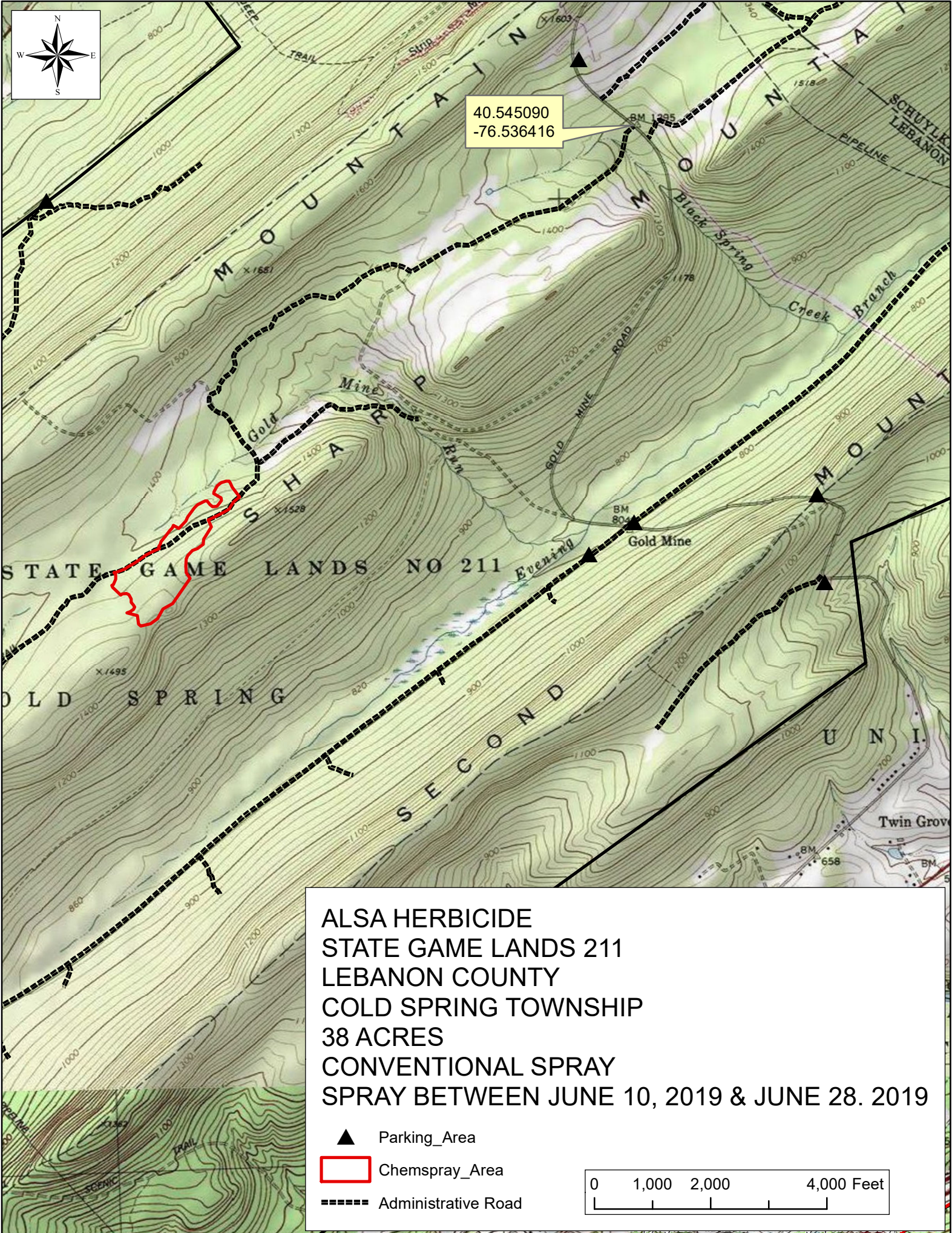
ADEQUATE DISTURBANCE HERBICIDE
STATE GAME LANDS 106
BERKS COUNTY
WINDSOR TOWNSHIP
31 ACRES
CONVENTIONAL SPRAY
SPRAY BETWEEN JUNE 10, 2019 & JUNE 28. 2019

- ▲ Parking_Area
- - - Trails
- Chemspray_Area
- ==== Administrative Road



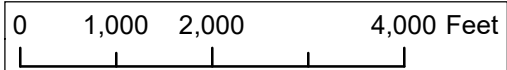


40.545090
-76.536416



ALSA HERBICIDE
STATE GAME LANDS 211
LEBANON COUNTY
COLD SPRING TOWNSHIP
38 ACRES
CONVENTIONAL SPRAY
SPRAY BETWEEN JUNE 10, 2019 & JUNE 28. 2019

- ▲ Parking_Area
- ▭ Chemspray_Area
- Administrative Road





40.545090
-76.536416

ALSA HERBICIDE
STATE GAME LANDS 211
LEBANON COUNTY
COLD SPRING TOWNSHIP
38 ACRES
CONVENTIONAL SPRAY
SPRAY BETWEEN JUNE 10, 2019 & JUNE 28. 2019

- ▲ Parking_Area
- ▭ Chemspray_Area
- Administrative Road

